

# Sherlock

## OS Support & System Requirements

### OS Support

- Android 15 or newer
- Windows Desktop Editions 11
- Linux Kernel 5.x, 6.x or newer supported release
  - Ubuntu 22.04LTS or newer
  - Debian 12 or newer

### CPU

- x86 and x64 | 2.0GHz or higher ARM | 1.0 GHz or higher

### Memory

- 512MB or higher

## Images & Capture

### Sensor Type

- LES Active Optical™ technology

### Camera

- TFT

### Resolution

- 500 ppi/dpi

### Grayscale

- 256 grayscale dynamic range

### Image Size

- 800 x 750 pixels

### Supported Image Formats

- RAW, JPEG, JPEG2000, BMP, PNG, WSQ (FBI-approved)

### Encryption

- 256-bit AES keys and RSA algorithms

### FBI / Image Certifications

- Mobile ID IQS FAP 45, GSA FIPS 201, FBI Appendix F, PIV

### Speed

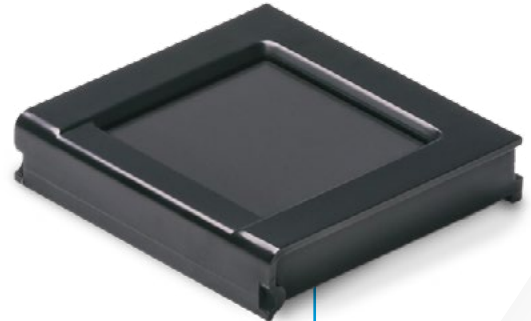
- Min frame rate > 10 fps

### API Interface

- Capture single finger direct/rolls, multi-device/multi-thread support

### Quality Scoring

- NFIQ v1 supported on all OSes and NFIQ2 for Windows



Model Number  
SH21100-000



## Weight & Dimensions

### Product Weight

- 55 grams / 0.12 lbs

### Platen Size

- 42 mm x 39 mm / 1.65" x 1.54"

### Sensing Area

- 40.6 mm x 38.1 mm / 1.60" x 1.50"

### Scanner Assembly Dimensions

- 65.2 mm x 59.5 mm x 14.2 mm / 2.57" x 2.34" x 0.56"

## Power & Connectors

### Interface

- USB 2.0

### Power Source

- USB Host

### USB Voltage Level

- 4.75V to 5.25V

## Conformance & Certifications

### USB Certification

- USB-IF USB.ORG

### Equipment Safety

- EN IEC 62368-1:2020+A11:2020

### Electrostatic Discharge

- In compliance with IEC 61000-4-2

### Hazardous Material

- RoHS Directive 2011/65/EU with amendment 2015/863

### Vibration Test

- Per Mil-STD-810F (Method 514.5), Category 24, Flg.514.5C-17

## Certifications

- Fingerprint Template Output Formats
  - ISO\_19794\_2\_2005/2011
  - ISO\_19794\_4\_2005/2011
  - ANSI\_INCITS\_378\_2004
  - ANSI\_INCITS\_381\_2004
- 500 PPI fingerprint capture supporting flats
- ISO 14001:20015
- MOSIP Compliant
- KISA PAD Compliant
- Meets TAA compliance for US customers

## Temperature & Humidity

### Operating Temperature

- -10°C ~ +55°C / 14°F ~ 131°F

### Humidity

- 20~95% RH < 40°C / 104°F (Non-condensing)

### Storage Temperature

- -40°C ~ +80°C / -40°F ~ 176°F

## Surface & Systems

### Ingress Protection / Water / Dust

- IP65 Sealed bezel to scanning surface

### Surface Durability

- MIL-C-675c 4.5010, MIL-STD-810F

### Cleaning & Sanitization

- For proper cleaning and disinfection of IB products, visit [integratedbiometrics.com/cleaning](https://integratedbiometrics.com/cleaning)

### Mean-Time Between Failures (MTBF)

- Based on 200 full single-finger enrollments per day, the Sherlock MTBF is 33 years.

## ABOUT INTEGRATED BIOMETRICS

Integrated Biometrics (IB), a pioneer in biometrics technology, designs and manufactures advanced, high-resolution touchless identification SDK software and the world's most mobile, durable and reliable FBI-certified fingerprint sensors. Law enforcement, military, homeland security, national identity, election validation, financial and social services organizations around the world rely on Integrated Biometrics products for fast, accurate enrollment, identification and verification, even in remote locations under extreme conditions.