

Streamline Your Identity Solutions with IB360

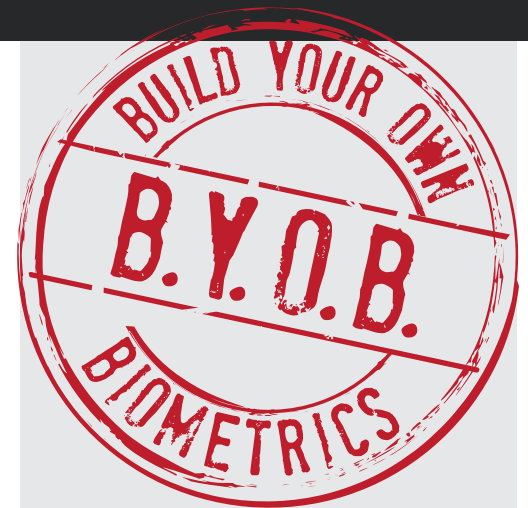
As a custom software developer/integrator, you understand the challenges of creating robust identity management systems. Collecting accurate biometric data, integrating algorithms and hardware, and managing the process can be complex, time-consuming, and prone to errors. Now you can take away the complexity of integrating biometrics and the associated processes and workflows.

Designed by experts who design biometric solutions, Integrated Biometrics' IB360 is a multi-biometric toolset of SDK-based software modules that enables you to develop identity-based solutions with minimal development cycles without a high-priced development team.

With its modular, highly-customizable architecture, IB360 allows you to focus on building innovative solutions instead of getting bogged down in the technical details.

Robust, simplified APIs are at the core of IB360 that integrate seamlessly with a wide range of biometric hardware and software, including fingerprint scanners, facial recognition cameras, iris scanners and more.

This means you can quickly and easily add state-of-the-art biometric functionalities to your applications without having to reinvent the wheel.



Integrator Benefits

Address the Major Challenges in Identity Solution Development

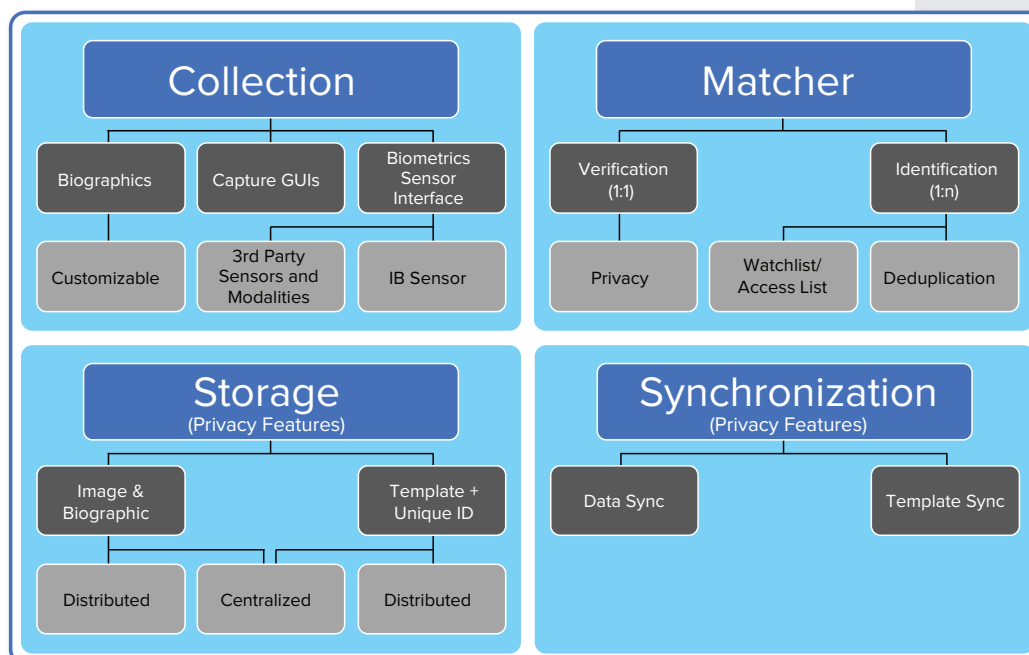
- Time-consuming processes
- Resource-intensive requirements

Take Pressure Off of the Development Cycle, Timeline, and Support

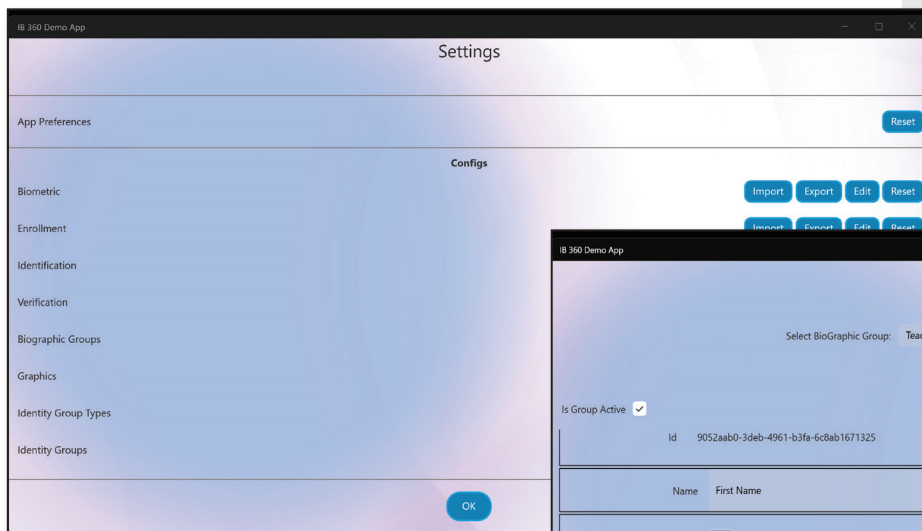
- Reduce development and support costs
- Lower risk in development, expenditure, deployment and support

Build on IB's Strengths

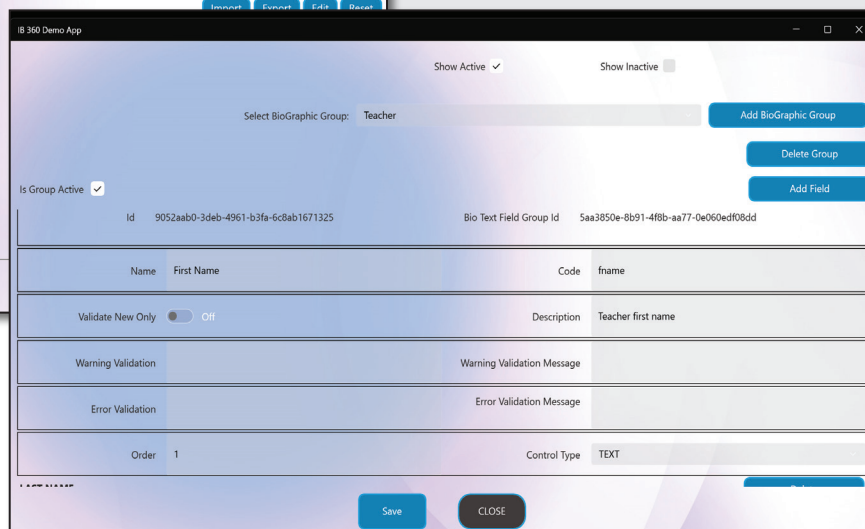
- Global fingerprint industry expertise
- In-house software development skills
- Experience with large-scale identity projects worldwide



IB360 brings it all together by providing simple, off-the-shelf functions like Enrollment, Identification, and Verification





Demo screens display the ease with which IB360 can be configured, from working with biographic data to adding functionality such as Enrollment, Identification and Verification.

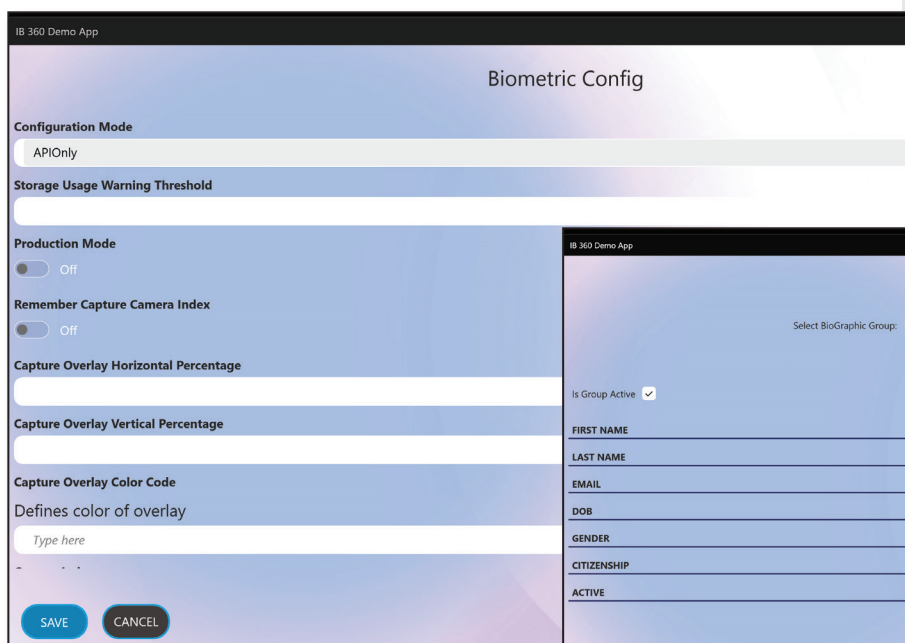


But IB360 is more than just a collection of APIs. It includes a suite of powerful tools for data management and system integration. From secure storage and synchronization to advanced matching, you'll have everything you need to build solutions that meet the highest standards of accuracy, reliability, and performance.

Whether you're developing a new identity management system or looking to enhance an existing one, IB360 is the solution that can help you get the job done faster, cheaper, and more efficiently. Streamline your development process, deliver superior products, and stay ahead of the competition.

android  Windows 

Experience the IB360 advantage and build your own biometrics.



Set preferences and parameters such as capture overlays to be used during the biometric data collection process.

