

Watson

Compact, Lightweight FBI Certified PIV FAP 45 2-Print Scanner

- Automatic Spoof Rejection
- Software-Based Autodetect

Watson encrypts communications between the scanner and external devices or applications using 256-bit AES keys and RSA algorithms. This closed-loop approach protects biometric data at the point of acquisition, across field wiring, and into the host application. By combining onboard security chipsets, private/public key structures, and industry best practices, Watson Mini ensures that sensitive personal information receives the highest level of scanner encryption currently available. For details, see encryption specification on the next page.

Watson also contains protection against tampering through a unique calibration file installed in each serialized unit during production. Attempts to defeat Watson's security through disassembly or hardware damage alters the device's calibration, rendering that device's imagery unacceptable.

Features & Benefits

Faster

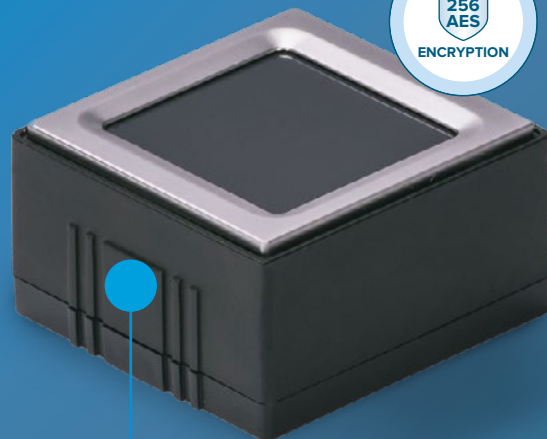
- Rapid, dry finger capture
- No need to clean latent prints in high-volume situations
- Easy integration via single SDK for all Integrated Biometrics FBI-certified products

Better

- Unaffected by extreme temperatures, direct sunlight, or bright artificial lights
- Compact, lightweight, and rugged
- Rejects common spoofing attacks
- Emits no bright lights during scans
- Meets or exceeds US military durability specifications

Smarter

- Competitive pricing
- Extremely low power consumption
- Eliminates consumables (silicone membranes or cleaning tape)
- Lower maintenance costs



- Encrypted communications between scanner and host application
- Intuitive, ergonomic, lightweight
- Built for mobile and desktop applications
- Compact 2-finger scanner for 1-, 2-, and 10-finger enrollment and verification



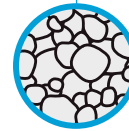
Light Emitting Sensor Technology

Integrated Biometrics' scanners use our patented light-emitting sensor (LES) technology to deliver fixed and mobile FBI-certified fingerprint imaging in an exceptionally durable, lightweight scanner.

To learn more, go to integratedbiometrics.com/technology

Hardware-based Automatic Spoof Rejection

IB's LES film technology cannot be activated using common types of manufactured, fake fingerprints. Leveraging the electrical properties of human skin, LES film does not luminesce in the presence of fingerprints based on silicone, glues, rubbers, and other non-conductive materials.



LES film contains luminescent phosphor microparticles that respond only to human fingers when they touch the film

Software-based Autodetect

IB's LES technology automatically detects the finger capture that generates the highest quality image without user intervention. Application developers enable this feature through IB's software development kit (SDK).

Two options available for PKCS (Public Key Cryptology standard)

PKCS – Elliptical Curve NIST P-521 or RSA 2048; AES-256, TRNG - NIST SP-800-90 A, B, C; Optional SHA-256, HMAC, MAC.

AVAILABLE VERSIONS	PART NUMBER	DESCRIPTION
Watson	WM110CA-E00	58" Cable, USB 2.0
	WM1109B-E00	24" Cable, Micro USB
	WM1109C-E00	24" Cable, USB C
	WM1108B-E00	8" Cable, Micro USB
	WM1118C-E00	8" Cable, USB C
	WM110FA-E00	3 Meter Cable, USB A 2.0
	WM1108M-E00	8" No Choke Molex, No Feet
	WM110DA-E00	1.8 Meter Cable, USB 2.0
	WM1128C-E00	8" Cable, USB C, Required for Samsung mobile devices
	WM1129C-E00	24" Cable, USB C, Required for Samsung mobile devices
	WM1114M-E00	70mm Molex, Pigtail Cable
	WM2A03M-E00	80mm Molex cable (FIPS-140-2 Encryption)

About Integrated Biometrics

Integrated Biometrics (IB), a pioneer in biometrics technology, designs and manufactures advanced, high-resolution touchless identification SDK software and the world's most mobile, durable and reliable FBI-certified fingerprint sensors. Law enforcement, military, homeland security, national identity, election validation, financial and social services organizations around the world rely on Integrated Biometrics products for fast, accurate enrollment, identification and verification, even in remote locations under extreme conditions.



integratedbiometrics.com

+1 888 840-8034

sales@integratedbiometrics.com

