



SHERLOCK

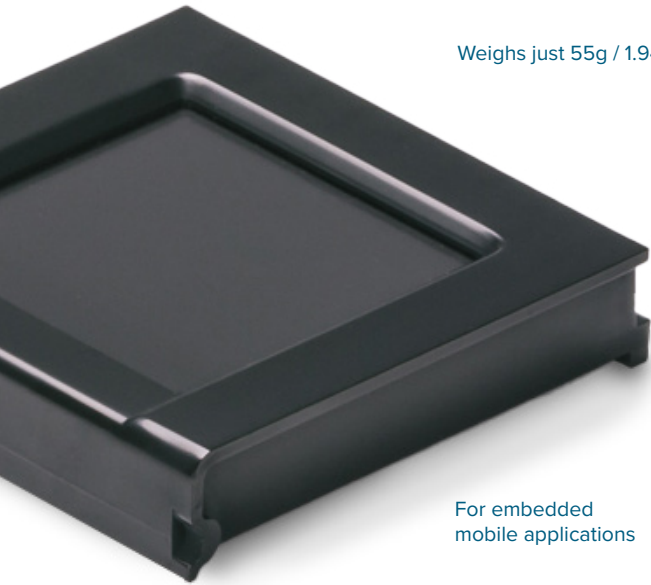
**Thin, Compact and Lightweight
FBI Certified FAP 45 2-Print Scanner**

- Automatic Spoof Rejection
- Software-Based Autodetect



SHERLOCK

Runs for hours connected to a smartphone



Weighs just 55g / 1.94oz

For embedded mobile applications

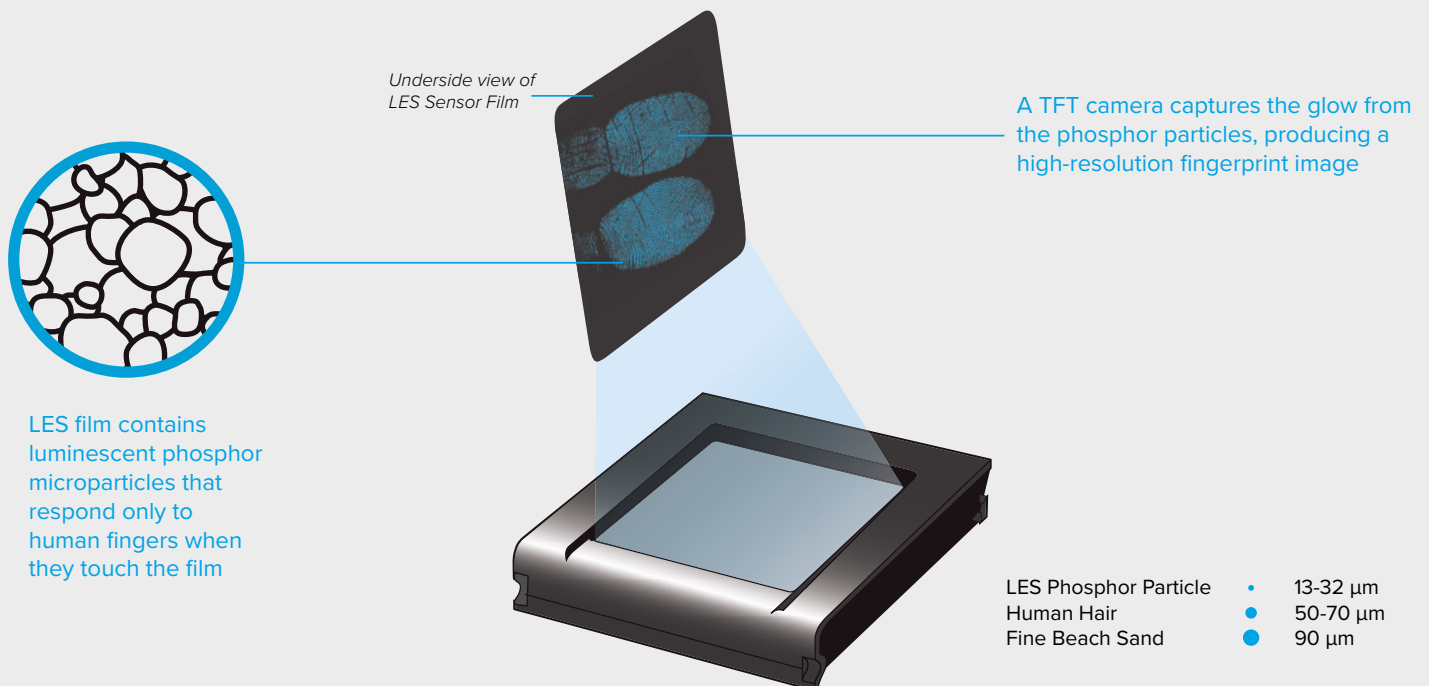
Supports 1-, 2-, and 10-finger enrollment and verification

Size matters. So does weight. So do mobility and reliability. Integrated Biometrics' Sherlock 2-finger FAP 45 scanner delivers FBI Certified Appendix F fingerprint images in an amazingly thin, lightweight format.

Sherlock enables 1-, 2-, and 10-finger enrollment and verification from a device that weighs just 55g / 1.94oz. Designed for both embedded and standalone applications, Sherlock combines performance and durability with the compact size and low power consumption that mobile identity management applications demand.

LES Light Emitting Sensor Technology

Integrated Biometrics' scanners use our patented light-emitting sensor (LES) technology to deliver fixed and mobile FBI certified fingerprint imaging in an exceptionally durable, lightweight scanner.



FEATURES & BENEFITS

Faster

- Rapid dry finger capture
- No need to clean latent prints in high-volume situations
- Easy integration via single SDK for all Integrated Biometrics FBI-certified products

Better

- Unaffected by extreme temperatures, direct sunlight, or bright artificial lights
- Compact, lightweight, and rugged
- Rejects common spoofing attacks
- Emits no bright lights during scans
- Meets or exceeds US military durability specifications

Smarter

- Competitive pricing
- Extremely low power consumption
- Eliminates consumables (silicone membranes or cleaning tape)
- Lower maintenance costs

Hardware-based Automatic Spoof Rejection

IB's LES film recognizes real versus manufactured fingerprints. LES-based scanners automatically reject fingerprints based on silicone, glue, rubber, and other common spoofing materials.

Software-Based Autodetect

IB's LES technology automatically detects the finger capture that generates the highest quality image without user intervention. Application developers enable this feature through the IB's software development kit (SDK).

AVAILABLE VERSIONS

Product

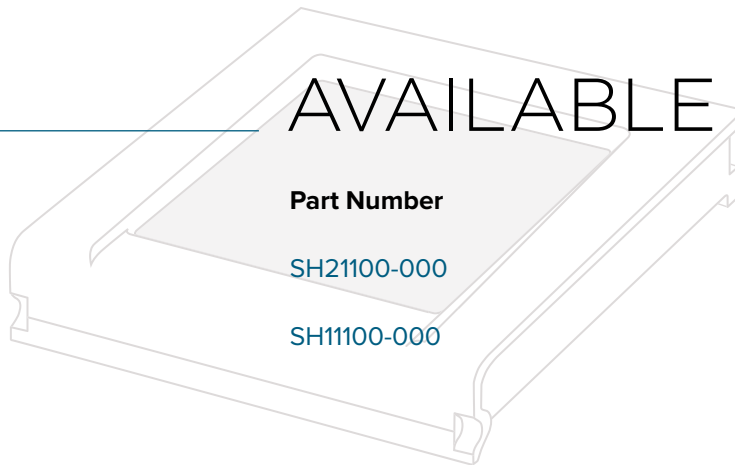
- Sherlock
- Sherlock

Part Number

- SH21100-000
- SH11100-000

Description

- Female Molex Connector
- Female Molex Connector



OS Support & System Requirements

OS Support

Windows 7 or later (32/64 bit), Linux Kernel 2.6 or later (32-bit, 64-bit, ARMv7-A, and ARMv8-A), Android 4.0 or later (32-bit, 64-bit, ARMv7-A, and ARMv8-A)

CPU

x86 and x64 | 2.0GHz or higher
ARM | 1.0 GHz or higher

Memory

512MB or higher

Images & Capture

Sensor Type

LES

Camera

TFT

Resolution

500 PPI

Grayscale

256 grayscale dynamic range

Image Size

800 x 750 pixels

Supported Image Formats

RAW, JPEG2000, BMP, PNG, WSQ ([FBI-approved](#))

FBI / Image Certifications

Mobile ID IQS FAP45, PIV, GSA FIPS 201, FBI Appendix F Certified

Speed

Minimum frame rate > 10 FPS

API Interface

Capture single finger direct/rolls, multi-device/multi-thread support

Quality Scoring

NFIQ v1 supported on all OSes and NFIQ2 for Windows

Weight & Dimensions

Product Weight

< 55 grams / 0.12 lbs

Platen Size

42 mm x 39 mm / 1.65" x 1.53"

Sensing Area

40 mm x 38 mm / 1.6" x 1.5"

Scanner Assembly Dimensions

65.2 mm x 59.5 mm x 14.2 mm / 2.57" x 2.34" x 0.56"

Power & Connectors

Interface

USB 2.0

Power Source

USB Host

USB Voltage Level

4.75V to 5.25V

Sleep*

< 2mA

**Feature not available on all models. Ask technical support for further information.*

Conformance & Certifications

USB Certification

USB-IF USB.ORG

FCC/CE Conformance

FCC Part15 (per ANSI C62.4:2003) Class A, CSA ICES-003 Class A, CE Emissions:EN55022:2006 Class A, CE Immunity EN 55024:1998/A1:2001/A2:2003, IEC61000-4-2

Air Discharge / Contact Discharge

In compliance with IEC 61000-4-2

Equipment Safety

IEC 62368-1

Hazardous Material

RoHS directive 2002/95/EC

TSCA*

Proposition 65*

Canada Prohibition*

**Compliant on SH21100-000*

Vibration Test

Per Mil-STD-810F (Method 514.5), Category 24, Flg.514.5C-17

Temperatures & Humidity

Operating Temperature

-10°C ~ +55°C / 14°F ~ 131°F

Humidity

30~85% RH < 40°C / 104°F (Non-condensing)

Storage Temperature

-40°C ~ +80°C / -40°F ~ 176°F

Surfaces & Systems

Ingress Protection / Water / Dust

IP65 Sealed bezel to scanning surface

Surface Durability

MIL-C-675c 4.5010, MIL-STD-810F

Cleaning & Sanitization

For proper cleaning and disinfection of IB products, visit integratedbiometrics.com/cleaning

Mean-Time Between Failures (MTBF)

Based on 200 full two-finger enrollments per day, the Sherlock MTBF is 33 years.

Warranty

All products have a 12-month warranty starting from the date of delivery. Additional years warranties available. Inquire with your salesperson.

View the warranty here: integratedbiometrics.com/warranty

