

IBScan Ultimate (SDK)

Software Development Kit for
FBI-Certified Sensors Utilizing
IB's Light-emitting Sensor
Technology (LES)



The IBScan Ultimate Software Development Kit (SDK) accelerates the integration of Integrated Biometrics' innovative light-emitting sensor fingerprint scanners into robust, high-performance OEM and integrator identity management solutions.

Designed for optimal performance, IBScan Ultimate SDK includes all necessary USB hardware drivers, as well as sample applications in multiple popular development languages.

Robust documentation for all application programming interface (API) functions enables rapid biometric solutions development for Windows, Linux, and Android, all from the same SDK.

IBScan Ultimate SDK Benefits

- No site or user license fees
- Eases capture of roll prints through smear detection
- Supports two and four finger slap capture through image segmentation
- Instantly identifies print capture quality through NFIQ scoring
- Delivers superior capture for damaged or dry fingers through Touch on Film (TOF) technology

Capture

- Single Finger Slap
- Four Finger Slap
- Two Finger Slap
- Single Finger Roll

Image Output

- RAW, JPEG2000, BMP, PNG, WSQ (FBI-approved)



Operating Systems*

- Android 10, 11, 12
- Windows Desktop Editions 7, 8, 10, 11
- Linux Kernel 4.0 or newer (32/64-bit, ARMv6, ARMv7)
 - Ubuntu 18.04, 20.04, or newer
 - Fedora 34, 35, or newer
 - Debian 10, 11, or newer

Contents

- API Manual for C
- API Manual for Java (and Android)
- Sample Applications and Source Code
 - VB.NET
 - C++
 - Java
 - C#
 - Android
- Getting Started Guide



Roll Sample Single Flat Two Finger Four Finger

Certifications

- Fingerprint Template Output Formats
 - ISO_19794_2_2005 / 2011, ISO_19794_4_2005 / 2011
 - ANSI_INCITS_378_2004 / ANSI_INCITS_381_2004
- 500 PPI fingerprint capture supporting rolls and flats
- PAD
- MOSIP L1
- ISO 9001:2015

* For legacy operating systems please contact support

About Integrated Biometrics

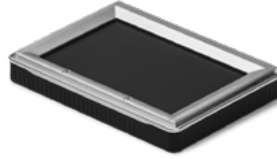
Integrated Biometrics, LLC designs and manufactures FBI-certified fingerprint sensors for law enforcement, military operations, homeland security, national identity, election validation, social services, and a wide range of commercial applications. The company's proprietary LES (light emitting sensor) technology enables lightweight scanners that outperform traditional prism-based devices in size, power consumption, portability, and reliability. Identity management solutions providers, government agencies, and corporations around the world rely on Integrated Biometrics' scanners to identify, enroll, and verify individual identity quickly and accurately, even in remote locations.

To download the SDK, please visit:
integratedbiometrics.com/support



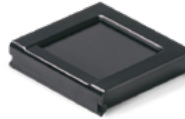
KOJAK | FAP 60, FBI Appendix F

- 10 Print Capture (4-4-2)
- Rolls + Slaps
- Enrollment + Verification



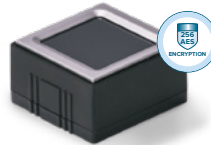
FIVE-0 | FAP 50, FBI Appendix F

- 10 Print Capture (4-4-2)
- Rolls + Slaps
- Enrollment + Verification



SHERLOCK | FAP 45, FBI Appendix F, PIV

- 10 Print Capture (2 x 5)
- Rolls + Slaps
- Enrollment + Verification



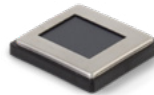
WATSON | FAP 45, FBI Appendix F, PIV

- 10 Print Capture (2 x 5)
- Rolls + Slaps
- Enrollment + Verification



COLUMBO 2.0 | FAP 30, PIV

- Single Finger Capture
- Verification



DANNO | FAP 30, PIV

- Single Finger Capture
- Verification

